

MARCHESA SETS AN UNFORGETTABLE TABLE, p41

TRADITIONAL HOME

September 2013

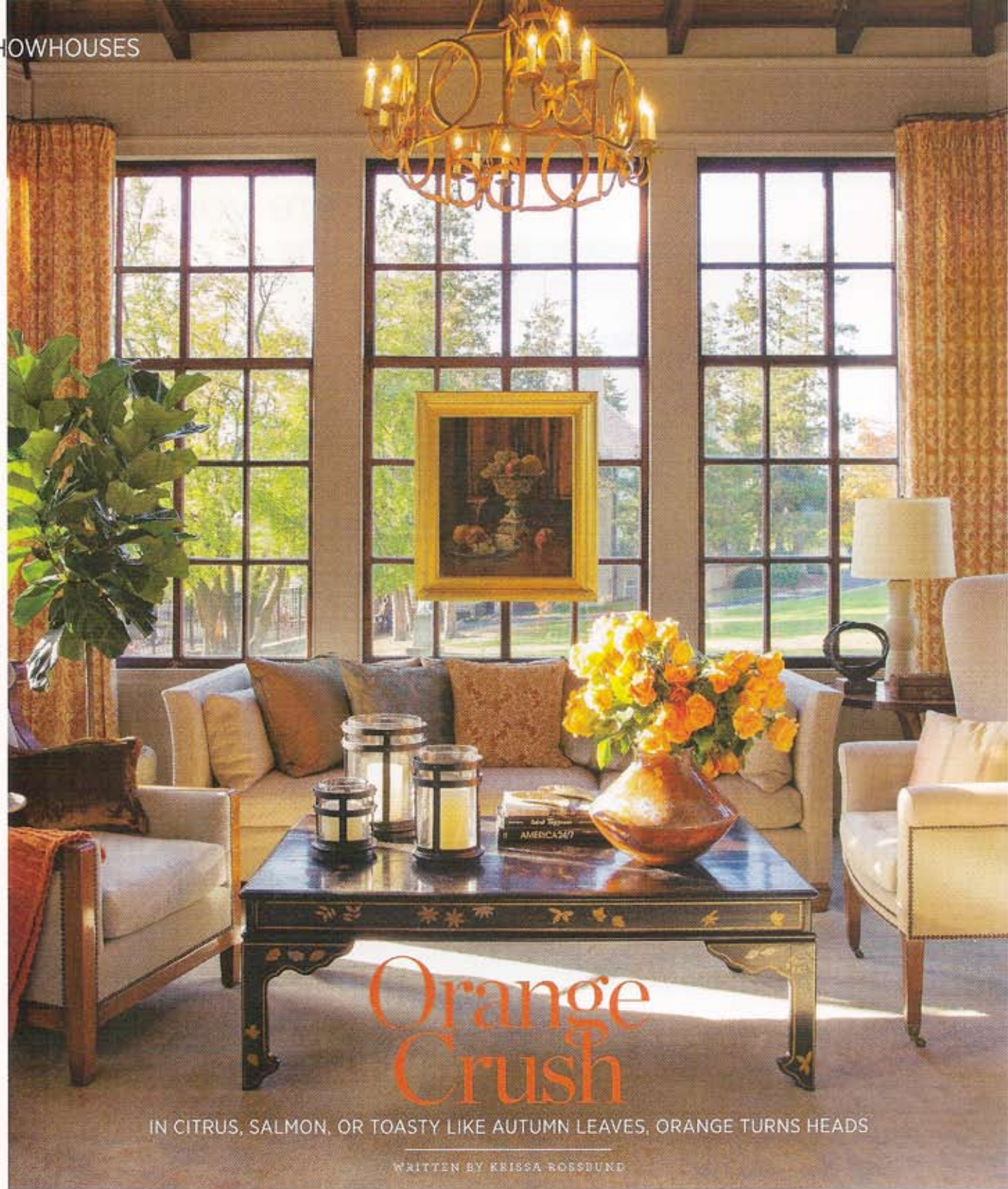
DRESS
YOUR
HOME IN
STYLE!

fashion forward

MENSWEAR MAVEN
JOSEPH ABBODD:
LOVING BOSTON,
THE RED SOX & HIS
NEW 1887 HOME

STYLE FOR THE HOME FROM FASHION'S TOP
DESIGNERS: RALPH LAUREN TO JASON WU, **p17**

10 SAVVY DESIGN TIPS FROM THE KITCHEN OF
ONE KINGS LANE'S SUSAN FELDMAN, **p66**



Orange Crush

IN CITRUS, SALMON, OR TOASTY LIKE AUTUMN LEAVES, ORANGE TURNS HEADS

WRITTEN BY KRISSA ROEBUND





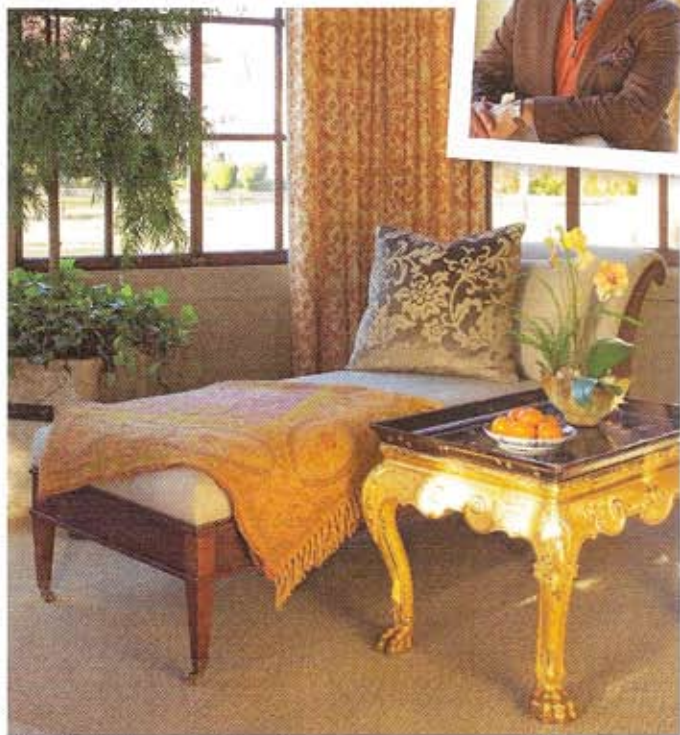
When designer Gerald Pomeroy listed the pros and cons for the sunporch at the Junior League of Boston Showhouse, the positives—a vaulted ceiling, noteworthy architecture, pretty windows, and beautiful vistas—far outweighed the gloom of the existing dreary veneer. With gusto, Pomeroy dove into his plan to beautify the room at the back of a rambling Victorian.

“I looked up the definition of ‘conservatory’ to discover it means having to do with plants and music,” explains Pomeroy. “I decided to change the space from a porch, which might have made it function as just another living room, to a room full of plants and music.”

The designer established the function of the room with two potted trees and a Steinway baby grand, but he needed furniture groupings to balance the weight

of the shapely and substantial piano. An openwork chandelier descends from the stained-oak ceiling and casts light over a furniture arrangement that includes a tufted sofa in nubby linen, an ivory-colored wing chair, an armchair warmed by an orange cashmere throw, and a chinoiserie cocktail table. The three walls of windows left little space for artwork, so Pomeroy mounted a traditional still-life oil to the window’s muntins, creating natural back lighting. In one corner, linen ticking covers a walnut chaise. A Fortuny pillow, a silk paisley throw, and a table with a gold-leaf base elevate the luxury quotient. Drapery panels fabricated from a pumpkin-and-beige linen textile echo the vibrant autumn foliage blazing outside the window: ➤

Produced by Estelle Bond Guralnick
Photography by Eric Roth



Gerald Pomeroy JUNIOR LEAGUE OF BOSTON SHOWHOUSE | NEWTON, MASSACHUSETTS